

# A L<sup>A</sup>T<sub>E</sub>X Package for Typesetting Crossword Puzzles and More\*

Gerd Neugebauer  
Brecklinge 10  
69256 Mauer (Germany)  
Net: `gene@gerd-neugebauer.de`

Documentation date: 2026/04/29

## Abstract

`cwpuzzle.dtx` provides a package to typeset crossword puzzles. The leading philosophy is that the puzzle and the solution are typeset from the same source.

The package can be used to produce several types of puzzles like the classical crossword puzzle, a number puzzle, and fill-in puzzles. In addition to the block separated puzzles the thick line delimited puzzles are supported as well.

---

\*This file documents `cwpuzzle.dtx` version 1.16 as of 2026/04/29.

# Contents

<b>1</b>	<b>About Crossword Puzzles</b>	<b>3</b>
1.1	Classical Crossword Puzzles . . . . .	3
1.2	Number Crossword Puzzles . . . . .	3
1.3	Fill-In Crossword Puzzles . . . . .	3
1.4	Line delimited Crossword Puzzles . . . . .	4
1.5	Solutions . . . . .	4
<b>2</b>	<b>Crossword Puzzles in L<sup>A</sup>T<sub>E</sub>X</b>	<b>4</b>
2.1	Crossword Puzzles from Files . . . . .	5
2.2	Layouting Crossword Puzzles . . . . .	6
<b>3</b>	<b>Input for Crossword Puzzles</b>	<b>6</b>
<b>4</b>	<b>Other Grid-based Puzzles</b>	<b>11</b>
4.1	Sudoku . . . . .	11
4.2	Kakuro . . . . .	12
<b>5</b>	<b>Parameters and Options</b>	<b>14</b>
<b>6</b>	<b>Further Plans</b>	<b>16</b>
6.1	General . . . . .	16
6.2	The Related Program . . . . .	16
<b>7</b>	<b>The Implementation</b>	<b>17</b>
7.1	Basic Definitions and Parameters . . . . .	17
7.2	The Frame of the Crossword Puzzle . . . . .	17
7.3	Predefined Cell Types . . . . .	21
7.4	Clues . . . . .	23
7.5	Numbers . . . . .	25
7.6	Sudoku . . . . .	26
7.7	Kakuro . . . . .	27
7.8	Initialization . . . . .	28

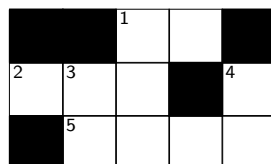
# 1 About Crossword Puzzles

Crossword puzzles can be an amusing but also a challenging hobby. Unfortunately at the time of this writing I am not aware of any good package to typeset crossword puzzles with L<sup>A</sup>T<sub>E</sub>X. Thus I decided to make one which at least fits my needs.

There are several types of crossword puzzles among. This package can only be used to typeset several of them. The basic assumption in this package is that puzzles are rectangular arrangements of boxes. Some of these boxes are black and others are prepared to take single letters. Each word in the grid is enclosed in black boxes or the outside.

Optionally there may be rectangular regions left blank inside the puzzle. They can be used to place ads or other informative texts inside the puzzle.

## 1.1 Classical Crossword Puzzles



Across 1 unit of measure  
2 \* 5 sectioning unit

Down 1 η 3 unit of measure  
4 non-proportional font

The “classical” type of a crossword puzzle words are marked with numbers and each word is accompanied with a clue which should help (or confuse) the reader. Those clues are listed after the frame of the puzzle.

## 1.2 Number Crossword Puzzles

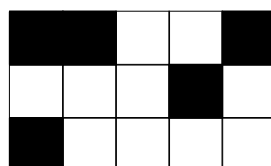


The following letters are used: AEPRSTX

1	2	3	4	5	6	7
---	---	---	---	---	---	---

The “number puzzle” variant contains only numbers instead of letters. Different numbers denote different letters. There are no clues. The reader is assumed to find a complete list of letters by filling appropriate words into the grid. Sometimes a word is already entered into the grid to ease the start.

## 1.3 Fill-In Crossword Puzzles



Words of length 2: EX SP TT  
Words of length 3: AST ETA  
Words of length 4: PART

The “fill-in puzzle” variant consists of a frame containing only black and white boxes. Additionally a list of words is given which have to be put into the frame until none is left and the frame is completed.

## 1.4 Line delimited Crossword Puzzles

The crossword puzzles we have seen before had the property that words are either delimited by the outer border or by a solid block. In addition line delimited puzzles are common. In this case a thicker line is drawn to indicate the end of a line.

1	2	3	4	5
6			7	
		8		

Across 1 unit of measure  
3 math function 6 list of  
tables 7  $\mu$  8 key

Down 1 class option 2  
math function 3  $\eta$  4 all  
in angle brackets 5  $\LaTeX$   
place picture element

In the example above we can see another feature. This feature is that two letters are circled. This can be used to indicate letters for a solution word of the crossword puzzle.

## 1.5 Solutions

		E	X	
A	S	T		T
	P	A	R	T

Often it is not only desirable to typeset the unsolved crossword puzzle but also the solution. This means that all the letters have to be filled in. This should be possible with the same source as the questions to avoid typos or redundancies leading to additional work.

Several variants of solutions come to mind. Primarily the solution should show the letters and suppress any clues. One major distinction is also whether or not the numbers of the words should be shown in the solution as well.

		<sup>1</sup> E	X	
<sup>2</sup> A	<sup>3</sup> S	T		<sup>4</sup> T
	<sup>5</sup> P	A	R	T

Finally there are the lists of letters in numbered puzzles. In the solution they will show the letters in them as well.

		E	X	
A	S	T		T
	P	A	R	T

The following letters are used: AEPRSTX

X	S	R	P	A	E	T
---	---	---	---	---	---	---

## 2 Crossword Puzzles in $\LaTeX$

Now we want to typeset crossword puzzles with  $\LaTeX$ . The package tries to simplify this task. A puzzle can be shown in two modes. The first one is the puzzle mode. Here the appearance is targeted towards a user who wants to solve the puzzle. Thus he wants to see the unfilled cell field.

The other mode is the solution mode. Here the user wants to see the solution in order to compare that his filled puzzle is correct or find correct parts of the puzzle that he didn't got.

We can imagine that the creator wants to typeset the unfilled puzzle on one side and the solution on the next side. To achieve this it would be helpful to use the same source for both places to avoid any potential differences. This can be done by placing the puzzle in a separate file.

## 2.1 Crossword Puzzles from Files

First let us consider the case that we put a puzzle in a file. For example we might have a file `p-1234.tex` for the puzzle. For our example this file contains an environment as follows:

```
\begin{Puzzle}{5}{3}%
|*   |*   |[1]E|X |*   |.
|[2]A|[3]S|T   |*   |[4]T|.
|*   |[5]P|A   |R   |T   |.
\end{Puzzle}
\begin{PuzzleClues}{\textbf{Across: }}%
\Clue{2}{MID}{\(\mid\)}%
\Clue{4}{TIMES}{\(\times\)}%
\Clue{5}{NEG}{\(\neg\)}%
\end{PuzzleClues}%
\begin{PuzzleClues}{\textbf{Down: }}%
\Clue{1}{SIMEQ}{\(\simeq\)}%
\Clue{2}{MIN}{log-like function}%
\Clue{3}{DEG}{log-like function}%
\end{PuzzleClues}%
```

Here a crossword puzzle is defined. It contains empty cells and cells with letters and cells with additional numbers to refer to the clues. You are free to arrange the parts however you want. Here the puzzle is above the clues. The clues are side by side.

You can also place the clues above the crossword puzzle. With `minipages` and options you can place them even in other constellations.

In the main document we can now use this file twice – one time for the unsolved puzzle and one time for the puzzle solution:

```

Lorem ipsum dolor sit...

\begin{PuzzleUnsolved}
\input{p-1234.tex}

\newpage
Lorem ipsum dolor sit amet, consectetur adipiscing elit,...

\begin{PuzzleSolution}
\input{p-1234.tex}

```

The macros `\PuzzleUnsolved` and `\PuzzleSolution` switch into the respective mode. In the first mode the letters are not shown but the clues are shown. In the second mode it is just vice versa.

The same trick also works for the other puzzle types in the `cwpuzzle` package.

## 2.2 Layouting Crossword Puzzles

The various building blocks for crossword puzzles are provided as macros or environments. Some of them have defaults. But most of the layout is left to you.

For instance the number puzzle from section 1.2 is produced with

```
\begin{minipage}{.35\textwidth}%
\begin{Puzzle}{5}{3}%
|*   |*   |[6]E|[1]X|*   |.
|[5]A|[2]S|[7]T|*   |[7]T|.
|*   |[4]P|[5]A|[3]R|[7]T|.
\end{Puzzle}%
\end{minipage}%
\begin{minipage}{.6\textwidth}
\PuzzleLetters{AEPRSTX}\medskip\par
\PuzzleNumbers{XSRPAET}%
\end{minipage}\medskip
```

As you can see the environment `Puzzle` and the macros `\PuzzleLetters` and `\PuzzleNumbers` from the `cwpuzzle` package are used. They are combined with minipages and paragraphs.

## 3 Input for Crossword Puzzles

The package provides a large number of ways to configure the behaviour. Those are mainly encapsulated in  $\text{T}_{\text{E}}\text{X}$  macros.

Before we describe the various options we will have a look at the basic environments and macros used to specified a crossword puzzle.

**Puzzle** (*env.*) This package provides the environment `Puzzle` which typesets the frame of a crossword puzzle. This environment takes two arguments. These arguments are the number of columns and the number of the rows of the puzzle. This means that essentially only rectangular puzzles can be typeset.

The example from section 1.1 has been entered as follows:

```
\begin{Puzzle}{5}{3}%
|*   |*   |[1]E|X |*   |.
|[2]A|[3]S|T   |*   |[4]T|.
|*   |[5]P|A   |R   |T   |.
\end{Puzzle}
```

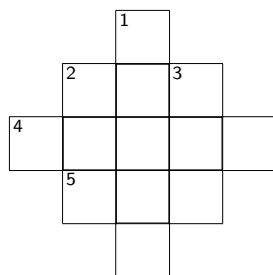
In this example we can see that inside the `Puzzle` environment there is one special character. This is the bar `|`. This bar is an active character in  $\text{T}_{\text{E}}\text{X}$ . Thus you can think of it like a macro.

The `|` macro takes three arguments. The first two arguments are optional, i.e. enclosed in brackets if present. The first optional argument denotes the number for numbered boxes. The second optional argument specifies the formatting of the cell.

The third argument is either empty `{}` or it consists of a single character. This argument describes the action to be performed.

- If this argument is a letter then it is simply shown in the solution and suppressed in the unsolved crossword puzzle.
- If this argument is an asterisk \* then a black box is produced.
- If this argument is a dot . then this marks the end of the current row. The next box is typeset at the beginning of the following row.
- If this argument is empty {} then a white box is typeset. This box does not contain a letter, nor does it have a frame. This macro can be used to leave room for larger boxed with ads. Alternatively this can be used to disable certain boxes to make a non-rectangular crossword puzzle.

```
\begin{Puzzle}{5}{5}
|{} |{} |[1]S|.
|{} |[2]M|I |[3]D|.
|[4]T|I |M |E |S |.
|{} |[5]N|E |G |.
|{} |{} |Q |.
\end{Puzzle}
```



**Across:** 2 | 4 × 5 ∩

**Down:** 1 ≃ 2 log-like  
function 3 log-like func-  
tion

Note that white-space is ignored after the arguments but not between the bar and the arguments.

The formatting of the cell is controlled by the second optional argument of the | macro. This optional argument may contain a list of several characters. Each of these characters is interpreted from left to right. The following list describes the meaning of the built-in characters.



| [8] [f] X

The letter f produces a simple frame around the cell. This is the default if nothing is specified.

8

| [8] [. ] X

The character . produces no additional rendering. It can be used to overwrite the default rendering which is to place a frame around the cell.



| [8] [\*] X

The character \* produces a black box. This is the same effect which can be achieved by providing the character \* to be filled into the cell for the solution.



| [8] [O] X

The letter O produces an oval which is drawn with the L<sup>A</sup>T<sub>E</sub>X macro \oval.






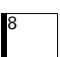



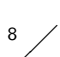

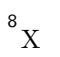
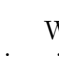
| [8] [o] X

The letter o produces an oval inside a frame. This is an abbreviation for the two letters fO.



| [8] [t] X

The letter t produces a frame with a thicker line at the top. The thickness of this line is controlled by the macro \PuzzleThickline.

		The letter T produces a thicker line at the top of the cell. The thickness of this line is controlled by the macro <code>\PuzzleThickline</code> .
	<code>  [8] [T] X</code>	
	<code>  [8] [b] X</code>	The letter b produces a frame with a thicker line at the bottom. The thickness of this line is controlled by the macro <code>\PuzzleThickline</code> .
	<code>  [8] [B] X</code>	The letter B produces a thicker line at the bottom of the cell. The thickness of this line is controlled by the macro <code>\PuzzleThickline</code> .
	<code>  [8] [l] X</code>	The letter l produces a frame with a thicker line at the left side of the cell. The thickness of this line is controlled by the macro <code>\PuzzleThickline</code> .
	<code>  [8] [L] X</code>	The letter L produces a thicker line at the left side of the cell. The thickness of this line is controlled by the macro <code>\PuzzleThickline</code> .
	<code>  [8] [r] X</code>	The letter r produces a frame with a thicker line at the right side of the cell. The thickness of this line is controlled by the macro <code>\PuzzleThickline</code> .
	<code>  [8] [R] X</code>	The letter R produces a thicker line at the right side of the cell. The thickness of this line is controlled by the macro <code>\PuzzleThickline</code> .
	<code>  [8] [/] X</code>	The character / produces a line crossing the cell from lower left to upper right.
	<code>  [8] [,] X</code>	The character , produces a line crossing the cell from upper left to lower right.
	<code>  [8] [S] X</code>	The character S produces the solution, i.e. the content of the cell is typeset. No decorations are placed around. For this purpose it should be combined with some other formatting characters.

Whenever you try to use an undefined specification for the cell frame a warning is printed and the letter is ignored.

`\PuzzleDefineCell` You can define additional cell renderings of your own. For this purpose the macro `\PuzzleDefineCell` is provided. It takes two arguments. The first argument contains the key under which the rendering should be addressed in the optional second argument of the macro `|`. The second argument contains the replacement text like in `\newcommand`. This replacement text can make use of two arguments. They are addressed with `#1` and `#2`. The first one contains the x coordinate of the cell to be rendered. The second one its y coordinate.

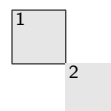
The following example shows for instance the definition of a new cell type addressed by the key `+` which draws a thick frame around the cell.

```
\PuzzleDefineCell{+}{
  \PuzzleThicklines
  \put(#1,#2){\framebox(1,1){}}
}
```

Finally we show how to define a cell type consisting of a colored box. The box itself is drawn with the help of the macro `\colorbox`. Thus it is necessary to load the package `color` which defines this macro.

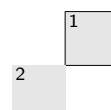
The two invocations show the combination with the `f` specifier. The specifier `f` is the default and used only if the user does not provide the optional argument. Thus we need to provide the `f` if we want to have it additionally.

```
\definecolor{gray}{gray}{.9}
\PuzzleDefineCell{c}{f%
  \put(#1,#2){\makebox(1,1){%
    \fboxsep=0pt
    \colorbox{gray}{\makebox(1,1){}}}}
}}
\begin{Puzzle}{2}{2}
|[1][cf]X|{}|.
|{}|[2][c]X|.
\end{Puzzle}
```



**\DefineColorCell** The macro `\DefineColorCell` simplifies this task by encapsulating the definition above. It has two arguments. The first one is the key character and the second one is the name of the color to use for the background.

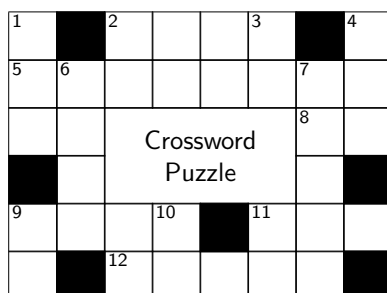
```
\definecolor{gray}{gray}{.9}
\PuzzleDefineColorCell{c}{gray}
\begin{Puzzle}{2}{2}
|{}|[1][cf]X|.
|[2][c]X|{}|.
\end{Puzzle}
```



**\Frame** The macro `\Frame` can be used to typeset ads or other text into larger boxes inside the frame of the crossword puzzle. For this purpose five arguments are required. The first two arguments are used to specify the lower left corner of the frame. The lower left corner has the coordinates 0,0 and the numbers increase upwards and to the right.

The third argument is the width of the frame and the fourth argument is the height of the frame measured in number of boxes. Finally, the fifth argument contains the text to be typeset. Per default it is typeset in a mini-page of the appropriate width centered horizontally and vertically.

```
\begin{Puzzle}{8}{6}
\Frame{2}{2}{4}{2}{\sffamily Crossword\{Puzzle}
|[1]E|*|[2]N|U|L|[3]L|*|[4]V|.
|[5]T|[6]R|I|A|N|G|[7]L|E|.
|A|U|{}|{}|{}|{}|[8]C|C|.
|*|L|{}|{}|{}|{}|E|*|.
|[9]B|E|T|[10]A|*|[11]L|I|M|.
|F|*|[12]L|A|B|E|L|*|.
\end{Puzzle}
```



**Across:** 2 empty 5  $\Delta$  8 carbon copy (letter.sty) 9  $\beta$  11 limes 12 mark it

**Down:** 1  $\eta$  2  $\ni$  3 logarithm 4  $\sim$  6 black rectangle 7  $\lceil$  9 bold face 10  $\text{\AA}$  11  $\leq$

**PuzzleClues** (*env.*) The clues in the classical crossword puzzle are typeset with the use of the environment **PuzzleClues**. This environment takes one argument which is typeset before the clues. The environment takes roughly the half of the text width and make a mini-page with this width. Thus two invocations of this environment are typeset side by side.

Alternatively if the solution is typeset then the environment **PuzzleClues** has no effect.

```
\begin{PuzzleClues}{\textbf{Across}}%
\Clue{1}{EX}{unit of measure}%
\Clue{2}{AST}{\(\ast\)}%
\Clue{5}{PART}{sectioning unit}%
\end{PuzzleClues}%
\begin{PuzzleClues}{\textbf{Down}}%
\Clue{1}{ETA}{\(\eta\)}%
\Clue{3}{SP}{unit of measure}%
\Clue{4}{TT}{nonproportional font}%
\end{PuzzleClues}%
```

**\Clue** The environment **PuzzleClues** defines one local macro. This macro is named **\Clue** and takes three arguments. The first argument is the number of the word. This should correspond to the number in the puzzle frame. The second argument is the word itself. Currently this is not used at all. Finally the third argument is the clue for the word.

If the unsolved puzzle is typeset then the first and the third argument are used. Otherwise all arguments are silently absorbed.

**\PuzzleLetters** The macro **\PuzzleLetters** can be used to typeset the list of used letters in numbered crossword puzzles. It has one argument which are the used letters (preferably in alphabetical order).

**\PuzzleNumbers** The macro **\PuzzleNumbers** can be used to generate a numbered list of boxes for the numbered crossword puzzles. The user is supposed to collect the found letters here.

**PuzzleWords** (*env.*) The environment **PuzzleWords** can be used to typeset the list of words for a fill-in puzzle. It takes one argument. This is the length of the words listed. For each length there should be an invocation of this environment. The words in this environment are supposed to be ordered alphabetically.

**\Word** The macro **\Word** is defined inside the environment **PuzzleWords**. It takes one argument which is the word itself.

```
\begin{PuzzleWords}{2}
\Word{EX}%
\Word{SP}%
\Word{TT}%
\end{PuzzleWords}%
\begin{PuzzleWords}{3}
\Word{AST}%
\Word{ETA}%
\end{PuzzleWords}%
\begin{PuzzleWords}{4}
\Word{PART}%
\end{PuzzleWords}%
```

## 4 Other Grid-based Puzzles

In addition to the crossword puzzles other puzzles based on a grid can also be typeset with this package. The basic principle is the same. Just some minor simplifications have been provided.

### 4.1 Sudoku

A Sudoku is a puzzle on a  $9 \times 9$  grid. It is filled with nine numbers. Each number occurs only once in each row, each column and each of the nine  $3 \times 3$  boxes. Initially some of the numbers are shown. The goal is to fill in all missing digits.

	2						9	
3		1	9		6	5		2
			8		4			
	9						5	
5			2		3			6
	7						2	
			4		7			
8		2	5		1	7		3
	5						8	

**Sudoku** (*env.*) The input for a Sudoku is given in a specialized environment. Since the size is fixed there is no need to specify a size. We separate the cells with a pipe symbol and mark the end of a line with a dot. To mark those cells containing the hints we precede the number with an asterisk.

The Sudoku shown above is typeset from the following source:

```
\begin{Sudoku}
| 7|*2| 4| 1| 3| 5| 6|*9| 8|.
|*3| 8|*1|*9| 7|*6|*5| 4|*2|.
| 9| 6| 5|*8| 2|*4| 1| 3| 7|.
| 2|*9| 6| 7| 1| 8| 3|*5| 4|.
|*5| 1| 8|*2| 4|*3| 9| 7|*6|.
| 4|*7| 3| 6| 5| 9| 8|*2| 1|.
| 6| 3| 9|*4| 8|*7| 2| 1| 5|.
|*8| 4|*2|*5| 9|*1|*7| 6|*3|.
| 1|*5| 7| 3| 6| 2| 4|*8| 9|.
\end{Sudoku}
```

As for crossword puzzles the macro `\PuzzleSolution` can be used to switch to solution mode. Then all numbers are shown. The parameters to modify the appearance of a puzzle work here as well.

7	2	4	1	3	5	6	9	8
3	8	1	9	7	6	5	4	2
9	6	5	8	2	4	1	3	7
2	9	6	7	1	8	3	5	4
5	1	8	2	4	3	9	7	6
4	7	3	6	5	9	8	2	1
6	3	9	4	8	7	2	1	5
8	4	2	5	9	1	7	6	3
1	5	7	3	6	2	4	8	9

Since the characters in the solution are numbers only we can use the following definition to colorize the cells in the solution.

```

\def\PuzzleSolutionContent#1{\fboxsep=0pt
\def\myColor{}%
\ifcase#1
\def\myColor{white}%0
\or\def\myColor{red}%1
\or\def\myColor{green}%2
\or\def\myColor{yellow}%3
\or\def\myColor{orange}%4
\or\def\myColor{lime}%5
\or\def\myColor{purple}%6
\or\def\myColor{violet}%7
\or\def\myColor{teal}%8
\or\def\myColor{brown}%9
\else\def\myColor{white}%*
\fi
\colorbox{\myColor}{\makebox(1,1){#1}}}

```

With the help of the package xcolor for the predefined colors we get the following output:

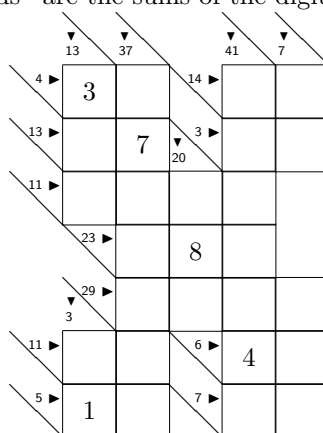
7	2	4	1	3	5	6	9	8
3	8	1	9	7	6	5	4	2
9	6	5	8	2	4	1	3	7
2	9	6	7	1	8	3	5	4
5	1	8	2	4	3	9	7	6
4	7	3	6	5	9	8	2	1
6	3	9	4	8	7	2	1	5
8	4	2	5	9	1	7	6	3
1	5	7	3	6	2	4	8	9

Note that this definition has to be restricted to a local block if you have solutions for other puzzle types in the same document.

## 4.2 Kakuro

In a Kakuro the cells are filled with digits. Each “word” consists of different digits; i.e. a number can not be repeated in a consecutive horizontal or vertical sequence of numbers.

The hints for the “words” are the sums of the digits.



**Kakuro** (*env.*) The input for a Kakuro is given in a specialized environment. It takes the width and the height as arguments. We separate the cells with a pipe symbol and mark the end of a line with a dot. To mark those cells containing the initial digits we precede the digit with an asterisk.

The hints are entered in angle brackets. They contain the horizontal and vertical sums separated by a colon. The sums can be empty if none should be typeset.

The Kakuro shown above is typeset from the following source:

```
\begin{Kakuro}{6}{9}
| - |<:13> |<:37> | - |<:41> |<:7> | - |.
|<4:> |* 3 | 1 |<14:> | 8 | 6 | - |.
|<13:> | 9 |* 7 |<3:20>| 2 | 1 | - |.
|<11:> | 1 | 2 | 3 | 5 | - | - |.
| - |<23:> | 6 |* 8 | 9 | - | - |.
| - |<29:3>| 8 | 9 | 7 | 5 | - |.
|<11:> | 2 | 9 |<6:> |* 4 | 2 | - |.
|<5:> | 1 | 4 |<7:> | 6 | 1 | - |.
| - | - | - | - | - | - | - |.
\end{Kakuro}
```

As for crossword puzzles the macro `\PuzzleSolution` can be used to switch to solution mode. Then all numbers are shown.

	3	1		8	6
	9	7		2	1
	1	2	3	5	
		6	8	9	
		8	9	7	5
	2	9		4	2
	1	4		6	1

```

\puzzleSolution
\puzzleUnitlength=14pt
\sffamily\footnotesize
\begin{Kakuro}{6}{9}
| - |<:13>|<:37>| - |<:41>|<:7>| - |.
|<4:>|* 3 | 1 |<14:>| 8 | 6 | - |.
|<13:>| 9 |* 7 |<3:20>| 2 | 1 | - |.
|<11:>| 1 | 2 | 3 | 5 | - | - |.
| - |<23:>| 6 |* 8 | 9 | - | - |.
| - |<29:3>| 8 | 9 | 7 | 5 | - |.
|<11:>| 2 | 9 |<6:>|* 4 | 2 | - |.
|<5:>| 1 | 4 |<7:>| 6 | 1 | - |.
| - | - | - | - | - | - |.
\end{Kakuro}

```

## 5 Parameters and Options

The package `cwpuzzle` can be controlled by a rich set of macros. In addition some settings can be performed with style options. The following style options are recognized:

**numbered** The solution numbering is turned on.

**nocenter** The puzzle is not typeset in a centered paragraph of its own.

**unboxed** The clues are not enclosed in mini-pages and centered on the page.

**normalsize** The puzzle is set in normalsize. This is the default.

**small** The puzzle is set in small. The size of the cell and the font size of the solution are adjusted accordingly.

**large** The puzzle is set in large. The size of the cell and the font size of the solution are adjusted accordingly.

**huge** The puzzle is set in huge. The size of the cell and the font size of the solution are adjusted accordingly.

**Huge** The puzzle is set in Huge. The size of the cell and the font size of the solution are adjusted accordingly.

**german**

**ngerman** The build in texts are switched to German variants. The defaults are English. This options is also in effect when given to the document class. The style inherits it from there.

**french** The build in texts are switched to French variants. The defaults are English. This options is also in effect when given to the document class. The style inherits it from there.

The style options can be passed to the style in the usual way:

```
\usepackage[nocenter,unboxed,small]{cwpuzzle}
```

The fine tuning can be achieved with the help of several macros. Those macros are described below.

`\PuzzleUnitlength` The length `\PuzzleUnitlength` determines the width and height of each single box in the frame of a crossword puzzle. The default value is 20pt.

`\PuzzleBlackBox` The macro `\PuzzleBlackBox` contains the commands to produce the black boxes. It has to produce at most of width and height of `\PuzzleUnitlength`. Per default it just produces a black rectangle of this size.

The following list shows some variants which can be achieved by redefining the macro `\PuzzleBlackBox`.



```
\renewcommand{\PuzzleBlackBox}{\rule{.75\PuzzleUnitlength}%
                                {.75\PuzzleUnitlength}}
```



```
\renewcommand{\PuzzleBlackBox}{\framebox(.75,.75){%
                                \framebox(.5,.5){}}}
```

Additional effects can be achieved by using shades of gray (with the `graphics` package).

`\PuzzleFont` The macro `\PuzzleFont` contains the font changing command issued before the frame of the crossword puzzle.

`\PuzzleNumberFont` The macro `\PuzzleNumberFont` contains the font changing command issued before a number in the frame of the crossword puzzle is typeset.

`\PuzzleClueFont` The macro `\PuzzleClueFont` contains the font changing command issued before the clues are typeset.

`\PuzzleWordsText` The macro `\PuzzleWordsText` contains the text which is typeset at the beginning of the environment `PuzzleWords`. It has one argument which contains the length of the words listed.

`\PuzzleLettersText` The macro `\PuzzleLettersText` contains the text which is typeset at the beginning of the macro `\PuzzleLetters`.

`\PuzzleSolution` The macro `\PuzzleSolution` arranges everything such that the following puzzles are typeset in the “solution” mode, i.e. the letters are shown and the clues are suppressed.

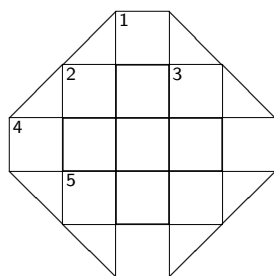
This macros has one optional argument which has to be **true** or **false**. This argument determines whether or not the numbers should also be shown in the solution. The default is **false** which means that the numbers are suppressed in the solution.

`\PuzzleUnsolved` The macro `\PuzzleUnsolved` arranges everything such that the following puzzles are typeset in the “unsolved” mode, i.e. the letters are suppressed and the clues are shown.

`\PuzzlePutNumber` The macro `\PuzzlePutNumber` is a configuration macro which typesets the number in a cell. The first argument is the x coordinate. The second argument is the y coordinate. The third argument is the number to be typeset. The coordinates are integer numbers. The coordinate (0,0) is the lower left corner.

`\PuzzleHook` The macro `\PuzzleHook` is called at the end of the `Puzzle` environment. It can be used to place additional graphical elements in the puzzle frame.

The following example shows a crossword puzzle which we have seen before and the definition for the `\PuzzleHook`.



```
\newcommand\PuzzleHook{
  \put(0,2){\line(1,-1){2}}
  \put(0,3){\line(1,1){2}}
  \put(5,2){\line(-1,-1){2}}
  \put(5,3){\line(-1,1){2}}
}
```

<code>\PuzzleLineThickness</code>	The macro <code>\PuzzleLineThickness</code> contains the width of the line used to frame the cells.
<code>\PuzzlePre</code>	This macro contains the code to be inserted before a puzzle is typeset. It is initialized to begin a new paragraph and center the puzzle.
<code>\PuzzlePost</code>	This macro contains the code to be inserted after a puzzle is typeset. It is initialized to end the paragraph and center the puzzle.
<code>\PuzzleCluePre</code>	This macro contains the code to be inserted before the clues are typeset in normal mode. It is initialized to center the puzzle clues.
<code>\PuzzleCluePost</code>	This macro contains the code to be inserted after the clues are typeset in normal mode. It is initialized to center the puzzle clues.
<code>\PuzzleContent</code>	This macro contains the content of a cell during formatting this cell. This enables the cell forming macro to access it.
<code>\PuzzleSolutionContent</code>	This macro processes the letter in solution mode. It takes one argument, the letter. This macro can be redefined to achieve special effects for the solution.
<code>\SudokuLinethickness</code>	This macro contains the thickness of the thick lines in a sudoku.
<code>\KakuroNumberFont</code>	This macro contains the definition of the font switching macros used when typesetting a Kakuro hint.
<code>\KakuroHintType</code>	This macro contains the cell type used when typesetting a Kakuro hint. It can be used to redefine the appearance.

## 6 Further Plans

### 6.1 General

Maybe I will add a mode for further variants of crossword puzzles sometimes.

Maybe I can add support for further languages if someone provides the appropriate texts. Contributions are welcome.

### 6.2 The Related Program

There is a related program written in Perl/Tk. This program can be used to manually construct crossword puzzles and save them in a format suitable for this package. Other features include the creation of a proper frame and filling with words.

Right now I have not prepared a distribution of this program yet since this program requires dictionaries which I can not distribute legally.

The crossword examples in this documentation have been computed with the help of the `cwp` program.

## 7 The Implementation

The crossword puzzle is basically implemented with the  $\text{\LaTeX}$  picture environment. This gives us enough flexibility and provides an high enough abstraction such that we do not have to fiddle around with too many low level details.

The natural unit in a crossword puzzle is a box which is empty or black. Thus the `\unitlength` is set to the width (and height) of such a box.

### 7.1 Basic Definitions and Parameters

First we identify this package.

```
1 \ProvidesPackage{cwpuzzle}[\filedate gene]
```

Next we load the package `amssymb` needed for the triangles used in Kakuros.

```
2 \RequirePackage{amssymb}
```

The `\dimen` register `\PuzzleUnitlength` stores the height and width of a box of the puzzle. The default is 20pt which is also shown in this documentation.

```
3 \newdimen\PuzzleUnitlength
4 \PuzzleUnitlength=20pt
```

`\PuzzleClueFont` The macro `\PuzzleClueFont` contains font changing commands issued before the clues are typeset.

```
5 \newcommand\PuzzleClueFont{\footnotesize}
```

`\PuzzleFont` The macro `\PuzzleFont` contains font changing commands issued before the puzzle is typeset.

```
6 \newcommand\PuzzleFont{\rmfamily\normalsize}
```

`\PuzzleNumberFont` The macro `\PuzzleNumberFont` contains font changing commands issued before the numbers in a puzzle are typeset.

```
7 \newcommand\PuzzleNumberFont{\sffamily\scriptsize}
```

`\PuzzleHook` Puzzles are typeset with the  $\text{\LaTeX}$  picture environment. At the end of this environment the macro `\PuzzleHook` is called. The package produces an empty default. Users may want to use this place to typeset additional elements on top of the puzzle.

The puzzle uses a `\unitlength` of `\PuzzleUnitlength`. Thus it is rather easy to address the boxes in the puzzle.

```
8 \let\PuzzleHook=\relax
```

### 7.2 The Frame of the Crossword Puzzle

To describe the coordinates where the next box should be typeset we need two counters for the coordinates. These counters are now allocated (even though we could use temporary counters from  $\text{\LaTeX}$ ).

```
9 \newcount\Puzzle@X
10 \newcount\Puzzle@Y
```

```

11 \begingroup
12 \catcode'\|=13
13 \gdef\Puzzle@@solution{
14   \let|=\Puzzle@Box@@solution
15   \let\Frame=\Puzzle@Frame@@solution
16 }
17 \gdef\Puzzle@@normal{
18   \let|=\Puzzle@Box@@normal
19   \let\Frame=\Puzzle@Frame@@normal
20 }
21 \endgroup

```

**Puzzle** (*env.*) The environment **Puzzle** typesets the frame of a crossword puzzle. It is implemented utilizing a **picture** environment. The `unitlength` is set to the `\PuzzleUnitlength`. Thus the navigation is fairly easy. The basic unit is width and height of a single box.

The macros which are local to the environment are activated. Thus we avoid collisions with other packages where the same macro names might be used.

Finally the counter which contain the x and the y coordinate have to be initialized.

The last action in the **picture** environment is the expansion of the macro `\PuzzleHook`. This can be used to include additional material in the **picture** environment. Primarily I have use this to include the ads. But now there is the macro `\Frame` for this purpose.

```

22 \newenvironment{Puzzle}[2]{\PuzzlePre
23   \catcode'\|=13
24   \@nameuse{Puzzle@@\Puzzle@TYPE}%
25   \unitlength=\PuzzleUnitlength
26   \linethickness{\PuzzleLineThickness}%
27   \Puzzle@Y=#2
28   \begin{picture}(#1,#2)
29     \Puzzle@Box@@normal.
30 }{%
31   \PuzzleHook
32   \end{picture}\PuzzlePost
33 }

```

`\PuzzleLineThickness` The macro `\PuzzleLineThickness` contains the width of the line used to frame the cells.

```

34 \newcommand\PuzzleLineThickness{.25pt}

```

`\PuzzlePre` This macro contains the code to be inserted before a puzzle is typeset. It is initialized to begin a new paragraph and center the puzzle.

```

35 \newcommand\PuzzlePre{%
36   \par\noindent\mbox{}\hfill
37 }

```

`\PuzzlePost` This macro contains the code to be inserted after a puzzle is typeset. It is initialized to end the paragraph and center the puzzle.

```

38 \newcommand\PuzzlePost{%
39   \hfill\null\par\noindent
40 }

```

`\Puzzle@Frame@@normal` The macro `Puzzle@Frame` is used to place additional rectangular regions into the puzzle frame. This frame can contain arbitrary text which is typeset in a centered environment.

This macro takes five arguments. The first two arguments are the coordinates of the upper left corner of the frame. The coordinates are logical coordinates starting from the lower left corner of the puzzle. The next two arguments are the width and the height of the frame given in the number of boxes covered. Finally the fifth argument contains the text which should appear in this frame.

```
41 \newcommand\Puzzle@Frame@@normal[5]{\put(#1,#2){\framebox(#3,#4){%
42     \begin{minipage}{#3\unitlength}\begin{center} #5
43     \end{center}\end{minipage}}}
```

`\Puzzle@Frame@@solution` For the solution the framed ads are simply ignored.

```
44 \newcommand\Puzzle@Frame@@solution[5]{}
```

`\PuzzleBlackBox` The macro `\PuzzleBlackBox` is called to typeset the black boxes. It should produce a box of at most width and height of `\PuzzleUnitlength`.

```
45 \newcommand\PuzzleBlackBox{\rule{\PuzzleUnitlength}{\PuzzleUnitlength}}
```

`\Puzzle@Box@@normal` The macro `\Puzzle@Box@@normal` performs all tasks when a box should be typeset in “normal” mode. The arguments are evaluated and the appropriate type of box typeset or other actions performed.

```
46 \newcommand\Puzzle@Box@@normal[1] [] {%
47   \def\Puzzle@tmp{#1}%
48   \Puzzle@Box@@normal@
49 }
```

`\Puzzle@Box@@normal@` The macro `\Puzzle@Box@@normal@` performs all tasks when a box should be typeset in “normal” mode. The arguments are evaluated and the appropriate type of box typeset or other actions performed.

```
50 \newcommand\Puzzle@Box@@normal@[2] [f] {%
51   \def\PuzzleContent{#2}%
52   \def\Puzzle@tmp{#2}%
53   \if\Puzzle@tmp.
54     \Puzzle@X=0
55     \advance\Puzzle@Y-1
56   \else
57     \ifx\Puzzle@tmp\@empty
58     \else
59       \if\Puzzle@tmp*
60         \Puzzle@Cell@Loop *#1{%
61         \else
62         \Puzzle@Cell@Loop #1{%
63         \fi
64       \fi
65       \ifx\@empty\Puzzle@tmp\@else
66         \PuzzlePutNumber{\Puzzle@X}{\Puzzle@Y}{\Puzzle@tmp}%
67       \fi
68       \advance\Puzzle@X 1
69     \fi
70 }
```

`\PuzzlePutNumber` The macro `\PuzzlePutNumber` is a configuration macro which typesets the number in a cell. The first argument is the x coordinate. The second argument is the y coordinate. The third argument is the number to be typeset.

```
71 \def\PuzzlePutNumber#1#2#3{%
72   \put(#1,#2){\makebox(1,.95)[t1]{\PuzzleNumberFont\,#3}}%
73 }
```

`\Puzzle@Cell@Loop` The macro `\Puzzle@Cell@Loop` processes its arguments until an empty argument is found. For each argument it is tried to invoke the corresponding cell drawing macro.

```
74 \def\Puzzle@Cell@Loop#1{%
75   \def\Puzzle@tmp{#1}%
76   \ifx\Puzzle@tmp@empty
77     \let\Puzzle@tmp\relax
78   \else
79     \expandafter\ifx\csname Puzzle@Cell@@#1\endcsname\relax
80       \typeout{cwpuzzle: Cell type #1 is undefined. I am ignoring it}%
81     \else
82       \csname Puzzle@Cell@@#1\endcsname{\Puzzle@X}{\Puzzle@Y}%
83     \fi
84     \let\Puzzle@tmp\Puzzle@Cell@Loop
85   \fi
86   \Puzzle@tmp
87 }
```

`\Puzzle@Box@@solution` The macro `\Puzzle@Box@@solution` performs all tasks when a box should be typeset in “solution” mode. The arguments are evaluated and the appropriate type of box typeset or other actions performed.

```
88 \newcommand\Puzzle@Box@@solution[1][]{%
89   \def\Puzzle@tmp{#1}%
90   \Puzzle@Box@@solution@
91 }
```

`\Puzzle@Box@@solution@` The macro `\Puzzle@Box@@solution@` performs all tasks when a box should be typeset in “solution” mode. The arguments are evaluated and the appropriate type of box typeset or other actions performed.

```
92 \newcommand\Puzzle@Box@@solution@[2][f]{%
93   \def\Puzzle@tmp{#2}%
94   \if\Puzzle@tmp.
95     \Puzzle@X=0
96     \advance\Puzzle@Y-1
97   \else
98     \ifx\Puzzle@tmp@empty
99     \else
100       \if\Puzzle@tmp*
101         \Puzzle@Cell@Loop *#1{%
102       \else
103         \Puzzle@Cell@Loop #1{%
104         \put(\Puzzle@X,\Puzzle@Y){\PuzzleSolutionContent{#2}}%
105       \fi
106     \fi
107     \def\Puzzle@tmp{#1}%
108     \ifx\Puzzle@tmp@empty\else
```

```

109      \ifPuzzle@SolutionNumbered
110      \PuzzlePutNumber{\Puzzle@X}{\Puzzle@Y}{\Puzzle@tmp@}%
111      \fi
112      \fi
113      \advance\Puzzle@X 1
114      \fi
115 }

```

`\PuzzleSolutionContent` The macro `\PuzzleSolutionContent` process the character in solution mode. Per default it converts the argument to upper case and sets it in a box of size  $1 \times 1$ .

```

116 \def\PuzzleSolutionContent#1{\makebox(1,1){\uppercase{#1}}}

```

### 7.3 Predefined Cell Types

In this section a series of frame types are defined.

`\PuzzleDefineCell` The macro `\PuzzleDefineCell` is a user command to define a new cell type. The first argument contains the key under which the cell type should be addressed. This key should be expandable and should result into a single letter. Special effects can be achieved with keys constituted of non letters or several characters.

The second argument contains the code to be stored for the key given.

```

117 \newcommand\PuzzleDefineCell[2]{
118   \global\@namedef{Puzzle@Cell@@#1}##1##2{#2}%
119 }

```

`\PuzzleDefineColorCell`

```

120 \newcommand\PuzzleDefineColorCell[2]{
121   \global\@namedef{Puzzle@Cell@@#1}##1##2{%
122     \fboxsep=0pt
123     \put(##1,##2){\makebox(1,1){\colorbox{#2}{\makebox(1,1){}}}}
124   }%
125 }

```

`\PuzzleThickline` The parameter `\PuzzleThickline` contains the expansion text to be inserted. whenever a thick line is required. This means that this macro arranges everything that a thick line is drawn. Usually it contains an invocation to `\linethickness`. It can be redefined to achieve other effects like even thicker lines or colored lines. Note that the macro is used inside a group in the predefined cell types.

```

126 \def\PuzzleThickline{\linethickness{2pt}}

```

`\Puzzle@Cell@T` The letter T produces a thicker line at the top of the cell. The thickness of this line is controlled by the macro `\PuzzleThickline`.

```

127 \PuzzleDefineCell{T}{{%
128   \advance#2 1
129   \PuzzleThickline
130   \put(#1,#2){\line(1,0){1}}}
131 }}

```

`\Puzzle@Cell@t` The letter t produces a frame with a thicker line at the top. The thickness of this line is controlled by the macro `\PuzzleThickline`.

```

132 \PuzzleDefineCell{t}{{%
133   \put(#1,#2){\framebox(1,1){}}

```

```

134 \advance#2 1
135 \PuzzleThickline
136 \put(#1,#2){\line(1,0){1}}
137 }}

```

`\Puzzle@Cell@@B` The letter B produces a thicker line at the bottom of the cell. The thickness of this line is controlled by the macro `\PuzzleThickline`.

```

138 \PuzzleDefineCell{B}{%
139 \PuzzleThickline
140 \put(#1,#2){\line(1,0){1}}
141 }}

```

`\Puzzle@Cell@@b` The letter b produces a frame with a thicker line at the bottom. The thickness of this line is controlled by the macro `\PuzzleThickline`.

```

142 \PuzzleDefineCell{b}{%
143 \put(#1,#2){\framebox(1,1){}}
144 \PuzzleThickline
145 \put(#1,#2){\line(1,0){1}}
146 }}

```

`\Puzzle@Cell@@l` The letter l produces a frame with a thicker line at the left side of the cell. The thickness of this line is controlled by the macro `\PuzzleThickline`.

```

147 \PuzzleDefineCell{l}{%
148 \put(#1,#2){\framebox(1,1){}}
149 \PuzzleThickline
150 \put(#1,#2){\line(0,1){1}}
151 }}

```

`\Puzzle@Cell@@L` The letter L produces a thicker line at the left side of the cell. The thickness of this line is controlled by the macro `\PuzzleThickline`.

```

152 \PuzzleDefineCell{L}{%
153 \PuzzleThickline
154 \put(#1,#2){\line(0,1){1}}
155 }}

```

`\Puzzle@Cell@@r` The letter r produces a frame with a thicker line at the right side of the cell. The thickness of this line is controlled by the macro `\PuzzleThickline`.

```

156 \PuzzleDefineCell{r}{%
157 \put(#1,#2){\framebox(1,1){}}
158 \advance #1 1
159 \PuzzleThickline
160 \put(#1,#2){\line(0,1){1}}
161 }}

```

`\Puzzle@Cell@@R` The letter R produces a thicker line at the right side of the cell. The thickness of this line is controlled by the macro `\PuzzleThickline`.

```

162 \PuzzleDefineCell{R}{%
163 \advance #1 1
164 \PuzzleThickline
165 \put(#1,#2){\line(0,1){1}}
166 }}

```

`\Puzzle@Cell@f` The letter f produces a simple frame around the cell. This is the default if nothing is specified.

```
167 \PuzzleDefineCell{f}{%
168   \put(#1,#2){\framebox(1,1){}}
169 }}
```

`\Puzzle@Cell@S` The letter S produces the solution without any other formatting around it.

```
170 \PuzzleDefineCell{S}{%
171   \put(#1,#2){\makebox(1,1){\expandafter\uppercase{\PuzzleContent}}}
172 }}
```

`\Puzzle@Cell@.` The character . produces no additional rendering. It can be used to overwrite the default rendering which is to place a frame around the cell.

```
173 \PuzzleDefineCell{.}{}
```

`\Puzzle@Cell@O` The letter O produces an oval which is drawn with the  $\text{\LaTeX}$  macro `\oval`.

```
174 \PuzzleDefineCell{O}{%
175   \put(\the#1.5,\the#2.5){\oval(1,1){}}
176 }}
```

`\Puzzle@Cell@o` The letter o produces an oval inside a frame. This is an abbreviation for the two letters fO.

```
177 \PuzzleDefineCell{o}{%
178   \put(#1,#2){\framebox(1,1){}}
179   \put(\the#1.5,\the#2.5){\oval(1,1){}}
180 }}
```

`\Puzzle@Cell@*` The letter \* produces a solid black box.

```
181 \PuzzleDefineCell{*}{%
182   \put(#1,#2){\framebox(1,1){\PuzzleBlackBox}}
183 }}
```

`\Puzzle@Cell@/` The character / produces a line crossing the cell from lower left to upper right.

```
184 \PuzzleDefineCell{/}{%
185   \put(#1,#2){\line(1,1){1}}
186 }}
```

`\Puzzle@Cell@,` The character , produces a line crossing the cell from upper left to lower right.

```
187 \PuzzleDefineCell{,}{%
188   \advance#2 1
189   \put(#1,#2){\line(1,-1){1}}
190 }}
```

## 7.4 Clues

`\Puzzle@Clue@normal` The first and the third argument are shown as clue. This macro is used for unsolved puzzles.

```
191 \newcommand\Puzzle@Clue@normal[3]{\textsf{#1} #3 }
```

`\Puzzle@Clue@solution` In solutions clues are simply suppressed. Thus all three arguments are discarded.

```
192 \newcommand\Puzzle@Clue@solution[3]{}
```

`Puzzle@Clues@@normal` (*env.*) The environment `Puzzle@Clues@@normal` is mapped to `PuzzleClues` in “normal” mode. It typesets its contents in a mini-page of approximately half text width.

```
193 \newenvironment{Puzzle@Clues@@normal}[1]{%
194   \let\Clue\Puzzle@Clue@@normal
195   \PuzzleCluePre
196   \PuzzleClueFont{#1}%
197 }{\PuzzleCluePost }
```

`\PuzzleCluePre` The macro `\PuzzleCluePre` contains the code which is inserted before the clues are typeset in normal mode.

```
198 \newcommand\PuzzleCluePre{%
199   \null\hfill
200   \begin{minipage}[t]{\PuzzleClueWidth}%
201 }
```

`\PuzzleClueWidth` The macro `\PuzzleClueWidth` contains the default width of the `PuzzleClue` environment.

```
202 \newcommand\PuzzleClueWidth{.45\textwidth}
```

`\PuzzleCluePost` The macro `\PuzzleCluePost` contains the code which is inserted after the clues are typeset in normal mode.

```
203 \newcommand\PuzzleCluePost{
204   \end{minipage}\hfill\null
205 }
```

`Puzzle@Clues@@solution` (*env.*) The environment `Puzzle@Clues@@solution` is mapped to `PuzzleClues` in “solution” mode. It just suppresses any output.

```
206 \newenvironment{Puzzle@Clues@@solution}[1]{%
207   \let\Clue\Puzzle@Clue@@solution
208 }{}
```

`\PuzzleWordsText` The macro `\PuzzleWordsText` is the text typeset at the beginning of the environment `PuzzleWords`. It takes one argument which is the length of the words listed.

```
209 \newcommand\PuzzleWordsText[1]{Words of length #1: }
```

`Puzzle@Words@@normal` (*env.*) The environment `Puzzle@Words@@normal` will be mapped to the environment `PuzzleWords` in “normal” mode. It just arranges that words are typeset after the `\PuzzleWordsText` has shown the length of the words. Finally a new paragraph is started.

```
210 \newenvironment{Puzzle@Words@@normal}[1]{%
211   \PuzzleWordsText{#1}%
212   \let\Word\relax
213 }{\par}
```

`Puzzle@Words@@solution` (*env.*) The environment `Puzzle@Words@@solution` will be mapped to the environment `PuzzleWords` in “solution” mode. It arranges things such that the contents is silently ignored.

```
214 \newenvironment{Puzzle@Words@@solution}[1]{%
215   \newcommand\Word[1]{}%
216 }{}
```

## 7.5 Numbers

`\PuzzleNumbers` The macro `\PuzzleNumbers` will produce a list of boxes with numbers for letters. It is intended for numbered crossword puzzles.

```
217 \newcommand\PuzzleNumbers[1]{\begingroup
218   \@nameuse{Puzzle@@\Puzzle@TYPE}%
219   \Puzzle@Y=0
220   \Puzzle@X=1
221   \unitlength=\PuzzleUnitlength
222   \Puzzle@Numbers#1.\endgroup}
```

`\Puzzle@Numbers` The macro `\Puzzle@Numbers` loops through the arguments until it finds a dot. For each argument it produces a box, either with the numbers or with the letters or both, depending on the current settings.

The loop is implemented via recursion. The box is typeset by the `|` macro which takes care of the current settings. For this purpose this character has to be made active temporarily.

```
223 \begingroup
224 \catcode'\|=13
225 \gdef\Puzzle@Numbers#1{%
226   \if#1.
227     \let\next\relax
228   \else
229     \begin{picture}(1,1)
230       \xdef\X{\the\Puzzle@X}%
231       \Puzzle@X=0
232       |[\X]{#1}%
233     \end{picture}%
234     \let\next\Puzzle@Numbers
235     \advance\Puzzle@X 1
236   \fi
237   \next
238 }
239 \endgroup
```

`\PuzzleLettersText` The macro `\PuzzleLettersText` contains the text typeset at the beginning of the `\PuzzleLetters` environment.

```
240 \newcommand\PuzzleLettersText{The following letters are used: }
```

`\PuzzleLetters` The macro `\PuzzleLetters` is intended to show the letters used in a numbered crossword puzzle. The argument is the (sorted) list of characters used.

```
241 \newcommand\PuzzleLetters[1]{\PuzzleLettersText #1\par}
```

`\Puzzle@TYPE` The macro `\Puzzle@TYPE` contains the type of the puzzle. It is used to find the appropriate initialization macro.

```
242 \newcommand\Puzzle@TYPE{normal}
```

`\PuzzleSolution` The macro `\PuzzleSolution` arranges everything such that the following puzzles are typeset in the “solution” mode, i.e. the letters are shown and the clues are suppressed.

This macros has one optional argument which has to be **true** or **false**. This argument determines whether or not the numbers should also be shown in the

solution. The default is `false` which means that the numbers are suppressed in the solution.

```

243 \newcommand\PuzzleSolution[1][false]{%
244   \@nameuse{Puzzle@SolutionNumbered#1}%
245   \let\Kakuro@HINT\Kakuro@nohint
246   \let\PuzzleClues\Puzzle@Clues@@solution
247   \let\endPuzzleClues\endPuzzle@Clues@@solution
248   \let\PuzzleWords\Puzzle@Words@@solution
249   \let\endPuzzleWords\endPuzzle@Words@@solution
250   \def\Puzzle@TYPE{solution}%
251 }

```

**\PuzzleUnsolved** The macro `\PuzzleUnsolved` arranges everything such that the following puzzles are typeset in the “unsolved” mode, i.e. the letters are suppressed and the clues are shown.

```

252 \newcommand\PuzzleUnsolved{%
253   \let\Kakuro@HINT\Kakuro@hint
254   \let\PuzzleClues\Puzzle@Clues@@normal
255   \let\endPuzzleClues\endPuzzle@Clues@@normal
256   \let\PuzzleWords\Puzzle@Words@@normal
257   \let\endPuzzleWords\endPuzzle@Words@@normal
258   \xdef\Puzzle@TYPE{normal}}

```

The boolean `Puzzle@SolutionNumbered` determines whether or not the solution should contain numbers. Initially it is set to “false”.

```

259 \newif\ifPuzzle@SolutionNumbered
260 \Puzzle@SolutionNumberedfalse

```

## 7.6 Sudoku

The challenge for the sudoku is to implement a convenient input syntax.

**Sudoku** (*env.*) The environment `Sudoku` is used to typeset the puzzle. The implementation defines the `begin` and `end` macro separately.

```

261 \begingroup
262   \catcode'\|=13
263   \gdef\Sudoku{\begin{Puzzle}{9}{9}%
264     \PuzzleFont
265     \def\PuzzleContent{}
266     \let\Puzzle@pipe=|
267     \def\PPa{\Puzzle@pipe[] [fS]}%
268     \def|##1{\ifx##1*\let\next\PPa\else
269       \Puzzle@pipe{##1}\let\next\relax\fi\next}
270   }
271 \endgroup

```

The macro `\endSudoku` contains the code to be expanded at the end of the environment. It draws the field with the  $3 \times 3$  boxes.

```

272 \gdef\endSudoku{%
273   \multiput(0,0)(1,0)9{\framebox(1,1){}}
274   \multiput(0,1)(1,0)9{\framebox(1,1){}}
275   \multiput(0,2)(1,0)9{\framebox(1,1){}}
276   \multiput(0,3)(1,0)9{\framebox(1,1){}}

```

```

277 \multiput(0,4)(1,0)9{\framebox(1,1){}}
278 \multiput(0,5)(1,0)9{\framebox(1,1){}}
279 \multiput(0,6)(1,0)9{\framebox(1,1){}}
280 \multiput(0,7)(1,0)9{\framebox(1,1){}}
281 \multiput(0,8)(1,0)9{\framebox(1,1){}}
282 \linethickness{\SudokuLinethickness}%
283 \put(0,0){\framebox(9,9){}}
284 \put(3,0){\framebox(3,9){}}
285 \put(0,3){\framebox(9,3){}}
286 \end{Puzzle}}

```

`\SudokuLinethickness` The macro `\SudokuLinethickness` contains the thickness of thick lines in a Sudoku.

```
287 \newcommand\SudokuLinethickness{2pt}
```

## 7.7 Kakuro

`\KakuroNumberFont` The macro `\KakuroNumberFont` is used to typeset the hints, i.e. the horizontal and vertical sums.

```
288 \newcommand\KakuroNumberFont{\sffamily\tiny}
```

`\Kakuro@cell` The macro `\Kakuro@cell` is used to typeset the cells. It analyzes the argument and acts accordingly.

```

289 \def\Kakuro@cell#1{%
290   \ifx#1.      \def\next{\Puzzle@pipe.}%
291   \else\ifx#1< \let\next\Kakuro@HINT
292   \else\ifx#1* \let\next\Kakuro@always
293   \else\ifx#1- \let\next\Kakuro@empty
294   \else\Puzzle@pipe#1 \let\next\relax
295   \fi\fi\fi\fi
296   \next
297 }%

```

`\Kakuro@always` The macro `\Kakuro@always` is used to draw a cell with an initial number.

```
298 \def\Kakuro@always{\Puzzle@pipe[] [fS]}%
```

`\Kakuro@empty` The macro `\Kakuro@empty` is used to draw an empty cell.

```
299 \def\Kakuro@empty{\Puzzle@pipe{}}%
```

`\Kakuro@hint` The macro `\Kakuro@hint` is used to draw hints.

```

300 \def\Kakuro@hint#1:#2>{%
301   \def\x{#2}%
302   \ifx\x\empty\else
303     \put(\Puzzle@X,\Puzzle@Y){%
304       \makebox(1,.8)[r]{\parbox{.95\unitlength}{%
305         \raggedright\KakuroNumberFont
306         $\blacktriangledown$\x{#2}}}%
307     \fi
308   \def\x{#1}%
309   \ifx\x\empty\else
310     \put(\Puzzle@X,\Puzzle@Y){%
311       \makebox(1,1.2){\parbox{.95\unitlength}{%
312         \raggedleft\KakuroNumberFont

```

```

313      #1 $\blacktriangleright$\mbox{}}}}
314  \fi
315  \Puzzle@pipe[][\KakuroHintType]{ }%

\Kakuro@nohint The macro \Kakuro@nohint is used to suppress hints in solution mode.
316 \def\Kakuro@nohint#1:#2>{%
317  \Puzzle@pipe[][,]{ }%

\Kakuro@HINT The macro \Kakuro@HINT contains the definition to be used to typeset hints. This
indirection is needed to suppress hints in solution mode.
318 \let\Kakuro@HINT\Kakuro@hint

Kakuro (env.) The environment Kakuro is used to typeset the puzzle. The implementation defines
the begin and end macro separately to cope with catcode changes.
319 \begingroup
320 \catcode'\|=13
321 \gdef\Kakuro#1#2{\begin{Puzzle}{#1}{#2}%
322  \catcode'\|=13
323  \let\Puzzle@pipe=|
324  \let|=\Kakuro@cell
325 }
326 \endgroup

The macro \endKakuro contains the code to be expanded at the end of the
environment.
327 \def\endKakuro{\end{Puzzle}}

\KakuroHintType The macro \KakuroHintType contains the cell type for typesetting hint cells. It
can be used to achieve a different look and feel.
328 \def\KakuroHintType{,}

```

## 7.8 Initialization

Finally we arrange that the default behavior is to typeset an unsolved crossword puzzle.

```

329 \PuzzleUnsolved

```

Now, that everything is in place we can arrange some package options.

```

330 \DeclareOption{numbered}{\Puzzle@SolutionNumberedtrue}
331 \DeclareOption{nocenter}{\let\PuzzlePre=\relax
332  \let\PuzzlePost=\relax}
333 \DeclareOption{unboxed}{\let\PuzzleCluePre=\relax
334  \let\PuzzleCluePost=\relax}
335 \DeclareOption{normalsize}{\PuzzleUnitlength=20pt
336  \def\PuzzleFont{\rmfamily\normalsize}}
337 \DeclareOption{small}{\PuzzleUnitlength=16pt
338  \def\PuzzleFont{\rmfamily\small}}
339 \DeclareOption{large}{\PuzzleUnitlength=24pt
340  \def\PuzzleFont{\rmfamily\large}}

341 \DeclareOption{huge}{\PuzzleUnitlength=32pt
342  \def\PuzzleFont{\rmfamily\huge}
343  \def\PuzzleNumberFont{\large}

```

```

344 \def\PuzzleClueFont{\large}
345 }
346 \DeclareOption{Huge}{\PuzzleUnitlength=38pt
347 \def\PuzzleFont{\rmfamily\Huge}
348 \def\PuzzleNumberFont{\Large}
349 \def\PuzzleClueFont{\Large}
350 }
351 \DeclareOption{german}{%
352 \renewcommand\PuzzleWordsText[1]{Worte der L\ "ange #1: }%
353 \renewcommand\PuzzleLettersText{Benutzte Buchstaben: }%
354 }
355 \DeclareOption{ngerman}{%
356 \renewcommand\PuzzleWordsText[1]{Worte der L\ "ange #1: }%
357 \renewcommand\PuzzleLettersText{Benutzte Buchstaben: }%
358 }

359 \DeclareOption{french}{%
360 \renewcommand\PuzzleWordsText[1]{Mots de longueur #1 : }%
361 \renewcommand\PuzzleLettersText{Les lettres suivantes sont utilisées : }%
362 }
363 \ProcessOptions\relax

That's all.

```

## Change History

1.10	General: Font changing macros modernized . . . . . 9, 28	1.4	\Puzzle@Box@@normal: Minor bug fix. Using \ifx instead of \if. 19
	\Kakuro@cell: Font changing macros modernized . . . . . 27		\Puzzle@Box@@solution: Minor bug fix. Using \ifx instead of \if. . . . . 20
	\KakuroNumberFont: Font changing macros modernized . 27	1.5	\Puzzle@Box@@normal: Reimplemented to cope with two optional arguments. . . . 19
	\PuzzleFont: Font changing macros modernized . . . . . 17		\Puzzle@Box@@normal@: Extracted from \Puzzle@Box@@normal. . 19
	\PuzzleNumberFont: Font changing macros modernized . 17		\Puzzle@Box@@solution: Reimplemented to cope with two optional arguments. . . . 20
1.13	Sudoku: Minor fix for the solution mode . . . . . 26		\Puzzle@Box@@solution@: Reimplemented to cope with two optional arguments. . . . 20
1.14	General: huge option added . . . . 28		\Puzzle@Box@@solution@: Reimplemented to cope with two optional arguments. . . . 20
	\PuzzleClueWidth: PuzzleClueWidth introduced. 24		\Puzzle@Cell@@: New . . . . . 23
1.15	General: french option added . . . 29		\Puzzle@Cell@@*: New . . . . . 23
1.16	General: Typos in documentation fixed. . . . . 1		\Puzzle@Cell@@/: New . . . . . 23
1.3	General: First public release. . . . 1		\Puzzle@Cell@@B: New . . . . . 22
			\Puzzle@Cell@@b: New . . . . . 22
			\Puzzle@Cell@@f: New . . . . . 23
			\Puzzle@Cell@@L: New . . . . . 22

\Puzzle@Cell@l: New	22	\Puzzle@Cell@s: New	23
\Puzzle@Cell@O: New	23	1.8	
\Puzzle@Cell@o: New	23	Kakuro: New	28
\Puzzle@Cell@R: New	22	\Kakuro@always: New	27
\Puzzle@Cell@r: New	22	\Kakuro@cell: New	27
\Puzzle@Cell@T: New	21	\Kakuro@empty: New	27
\Puzzle@Cell@t: New	21	\Kakuro@HINT: New	28
\Puzzle@Cell@Loop: New	20	\Kakuro@hint: New	27
\PuzzleDefineCell: New	21	\Kakuro@nohint: New	28
\PuzzleDefineColorCell: New	21	\KakuroHintType: New	28
\PuzzleLineThickness: New	18	\KakuroNumberFont: New	27
\PuzzlePost: New	18	Sudoku: New	26
\PuzzlePre: New	18	\SudokuLinethickness: New	27
\PuzzlePutNumber: New	20		
1.6		1.9	
General: Several style options		\Puzzle@Box@@solution@: Macro	
defined	28	PuzzleSolutionContent	
1.7		introduced as extension point	20
\Puzzle@Box@@normal@:		\PuzzleSolutionContent: Macro	
\PuzzleContent added to		PuzzleSolutionContent	
transport the letter to the		introduced as extension point	21
formatting macro.	19		

# Index

Numbers written in *italic* refer to the page where the corresponding entry is described; numbers underlined refer to the code line of the definition; numbers in roman refer to the code lines where the entry is used.

<b>B</b>	
<code>\blacktriangledown</code> .....	306
<code>\blacktriangleright</code> .....	313
<b>C</b>	
<code>\Clue</code> .....	10, 194, 207
<code>\colorbox</code> .....	123
<b>D</b>	
<code>\DeclareOption</code> .	330, 331, 333, 335, 337, 339, 341, 346, 351, 355, 359
<code>\DefineColorCell</code> .....	9
<b>E</b>	
<code>\empty</code> .....	302, 309
<code>\endKakuro</code> .....	327
<code>\endPuzzle@Clues@normal</code> .....	255
<code>\endPuzzle@Clues@solution</code> .....	247
<code>\endPuzzle@Words@normal</code> .....	257
<code>\endPuzzle@Words@solution</code> .....	249
<code>\endPuzzleClues</code> .....	247, 255
<code>\endPuzzleWords</code> .....	249, 257
<code>\endSudoku</code> .....	272
environments:	
Kakuro .....	13, 319
Puzzle .....	6, 22
Puzzle@Clues@normal .....	193
Puzzle@Clues@solution .....	206
Puzzle@Words@normal .....	210
Puzzle@Words@solution .....	214
PuzzleClues .....	10
PuzzleWords .....	10
Sudoku .....	11, 261
<code>\expandafter</code> .....	79, 171
<b>F</b>	
<code>\fboxsep</code> .....	122
<code>\Frame</code> .....	9, 15, 19
<b>H</b>	
<code>\Huge</code> .....	347
<code>\huge</code> .....	342
<b>I</b>	
<code>\ifPuzzle@SolutionNumbered</code> .	109, 259
<b>K</b>	
<code>\Kakuro</code> .....	321
Kakuro (env.) .....	13, 319
<code>\Kakuro@always</code> .....	292, 298
<code>\Kakuro@cell</code> .....	289, 324
<code>\Kakuro@empty</code> .....	293, 299
<code>\Kakuro@HINT</code> .....	245, 253, 291, 318
<code>\Kakuro@hint</code> .....	253, 300, 318
<code>\Kakuro@nohint</code> .....	245, 316
<code>\KakuroHintType</code> .....	16, 315, 328
<code>\KakuroNumberFont</code> ..	16, 288, 305, 312
<b>L</b>	
<code>\Large</code> .....	348, 349
<code>\line</code> .....	130, 136, 140, 145, 150, 154, 160, 165, 185, 189
<code>\linethickness</code> .....	26, 126, 282
<b>M</b>	
<code>\multiput</code> .....	273, 274, 275, 276, 277, 278, 279, 280, 281
<b>N</b>	
<code>\next</code> .....	227, 234, 237, 268, 269, 290, 291, 292, 293, 294, 296
<b>O</b>	
<code>\oval</code> .....	175, 179
<b>P</b>	
<code>\parbox</code> .....	304, 311
<code>\PPa</code> .....	267, 268
<code>\ProcessOptions</code> .....	363
Puzzle (env.) .....	6, 22
<code>\Puzzle@normal</code> .....	17
<code>\Puzzle@solution</code> .....	13
<code>\Puzzle@Box@normal</code> .....	18, 29, 46
<code>\Puzzle@Box@normal@</code> .....	48, 50
<code>\Puzzle@Box@solution</code> .....	14, 88
<code>\Puzzle@Box@solution@</code> .....	90, 92
<code>\Puzzle@Cell@</code> .....	187
<code>\Puzzle@Cell@*</code> .....	181
<code>\Puzzle@Cell@.</code> .....	173
<code>\Puzzle@Cell@/</code> .....	184
<code>\Puzzle@Cell@B</code> .....	138
<code>\Puzzle@Cell@b</code> .....	142
<code>\Puzzle@Cell@f</code> .....	167
<code>\Puzzle@Cell@L</code> .....	152
<code>\Puzzle@Cell@l</code> .....	147
<code>\Puzzle@Cell@O</code> .....	174
<code>\Puzzle@Cell@o</code> .....	177

\Puzzle@Cell@@R	162	142, 147, 152, 156, 162, 167,	
\Puzzle@Cell@@r	156	170, 173, 174, 177, 181, 184, 187	
\Puzzle@Cell@@S	170	\PuzzleDefineColorCell	120
\Puzzle@Cell@@T	127	\PuzzleFont	6,
\Puzzle@Cell@@t	132	15, 264, 336, 338, 340, 342, 347	
\Puzzle@Cell@Loop	60, 62, 74, 101, 103	\PuzzleHook	8, 15, 31
\Puzzle@Clue@@normal	191, 194	\PuzzleLetters	10, 241
\Puzzle@Clue@@solution	192, 207	\PuzzleLettersText	
\Puzzle@Clues@@normal	254	15, 240, 241, 353, 357, 361	
Puzzle@Clues@@normal (env.)	193	\PuzzleLineThickness	16, 26, 34
\Puzzle@Clues@@solution	246	\PuzzleNumberFont	7, 15, 72, 343, 348
Puzzle@Clues@@solution (env.)	206	\PuzzleNumbers	10, 217
\Puzzle@Frame@@normal	19, 41	\PuzzlePost	16, 32, 38, 332
\Puzzle@Frame@@solution	15, 44	\PuzzlePre	16, 22, 35, 331
\Puzzle@Numbers	222, 223	\PuzzlePutNumber	15, 66, 71, 110
\Puzzle@pipe	266, 267, 269,	\PuzzleSolution	15, 243
290, 294, 298, 299, 315, 317, 323		\PuzzleSolutionContent	16, 104, 116
\Puzzle@SolutionNumberedfalse	260	\PuzzleThickine	126
\Puzzle@SolutionNumberedtrue	330	\PuzzleThickline	126, 129,
\Puzzle@tmp	52, 53, 57, 59, 75, 76,	135, 139, 144, 149, 153, 159, 164	
77, 84, 86, 93, 94, 98, 100, 107, 108		\PuzzleUnitlength	3, 4, 15,
\Puzzle@tmp@	47, 65, 66, 89, 110	25, 45, 221, 335, 337, 339, 341, 346	
\Puzzle@TYPE	24, 218, 242, 250, 258	\PuzzleUnsolved	15, 252, 329
\Puzzle@Words@@normal	256	\PuzzleWords	248, 256
Puzzle@Words@@normal (env.)	210	PuzzleWords (env.)	10
\Puzzle@Words@@solution	248	\PuzzleWordsText	
Puzzle@Words@@solution (env.)	214	15, 209, 211, 352, 356, 360	
\Puzzle@X	9,		
54, 66, 68, 82, 95, 104, 110,		S	
113, 220, 230, 231, 235, 303, 310		\Sudoku	263
\Puzzle@Y	10, 27, 55,	Sudoku (env.)	11, 261
66, 82, 96, 104, 110, 219, 303, 310		\SudokuLinethickness	16, 282, 287
\Puzzle@BlackBox	15, 45, 182		
\Puzzle@Clue@Font	5, 15, 196, 344, 349	T	
\Puzzle@Clue@Post	16, 197, 203, 334	\typeout	80
\Puzzle@Clue@Pre	16, 195, 198, 333		
\Puzzle@Clues	246, 254	W	
Puzzle@Clues (env.)	10	\Word	10, 212, 215
\Puzzle@Clue@Width	200, 202		
\Puzzle@Content	16, 51, 171, 265	X	
\Puzzle@DefineCell		\X	230, 232
8, 117, 127, 132, 138,		\x	301, 302, 308, 309

## S

\Sudoku	263
Sudoku (env.)	11, 261
\SudokuLinethickness	16, 282, 287

## T

\typeout	80
----------	----

## W

\Word	10, 212, 215
-------	--------------

## X

\X	230, 232
\x	301, 302, 308, 309